

NAI Region 2 Virtual Workshop 2021

Tuesday Feb 23, 2021- Thursday Feb 25, 2021

All times Eastern Standard

Tuesday Feb 23

1:00pm- Welcome

1:15- Sheila Arnold

1:45- Break

2:00- Session I- 90 min.

Climate Interpretation Skills for a Changing World- Liz Wist and Geneviève de Messières- Maryland Coastal Bays Program and NASA Goddard Space Flight Center/Earth to Sky

Discuss obstacles and tools for climate communication. Explore the science of our case study, a living shoreline. Collaboratively develop an interpretive strategy for the case study or for your site.

DEAI Dialogue: Ways to Talk About Protests of Systemic Racism as a Staff- Mel Harper, Interpretive Projects Manager; Rachel Trinkley, Manager of Interpretive Resources, National Gallery of Art

During global protests of systemic racism, the National Gallery of Art's Inclusion Roundtable came together in virtual meetings. Join us to hear how we structured these internal staff conversations and the lessons learned.

3:30- Break

3:45- Session II- 60 min +

Virtual Nature Preschool: Re-imagining the possibilities- Tiffany Jenkins & Calvin Sweeney, Maryland National Capital Parks and Planning Commission/ Montgomery Parks

Nature preschool, virtual? The ironies seem obvious. Join us as we share our journey of how to plan for, learn from, and evaluate the virtual nature preschool experience.

Designing for Accessibility- Heather Mortimer / Graphic Designer and Technical Writer, NASA GLOBE Observer

Good design builds trust, while bad design can create barriers between visitors and your content. Luckily, you don't need to be a graphic designer to create quality interpretive materials.

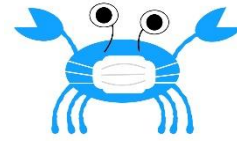
7:30- 8:30 Social Hour



Wednesday Feb 24

1:00- Region 2 Business Meeting

2:00- Session III- 90 min



Homegrown Parks: Create Your Own State Park & Plant a Park- Melissa Boyle-Acuti, Chief of Interpretation MD State Parks, Ted White, Supervisory Park Ranger

Create Your Own State Park / Plant a Park: Interpreters from Maryland State Parks and the National Park Service empower ordinary people to become stewards of biodiversity at home.

Identification & Ecology of Mid-Atlantic Diurnal Raptors- John Shafer, Board Member – Cape May Raptor Banding Project, Inc.

John will be using photos from his banding operations and other sources including interpretive birding excursions, to reveal identification points for raptors commonly found within the Mid-Atlantic region. Specifics of morphology and behavior for each group of raptors will be discussed including what research is revealing about their populations along the eastern flyway. John will share how plumage and other detailed identification traits can help sex and age each species. If we have time after Q&A, nocturnal raptors from the same region will be discussed.

3:45- Session IV- 60 min

When Hands-On Becomes Hands-Off: Adapting Museum Experiences During a Pandemic- Kevin Allor, Education Interpreter II, Calvert Marine Museum

Get tips, ideas, and examples for creating virtual content in a museum setting.

Interpreting Chesapeake Women@ Sites & Parks- Heather Huyck Co-chair, Research & Interpretation, NCWHS (National Collaborative for Women's History Sites)

Heather Huyck, author of *Doing Women's History in Public: A Handbook for Interpretation at Museums and Historic Sites* features a framework and group exercise to research and interpret Chesapeake women.

7:00- Meet the NAI National Board- members of the NAI National Board will join us to share news from the National Office and answer your questions.

7:30-8:30 Social Hour

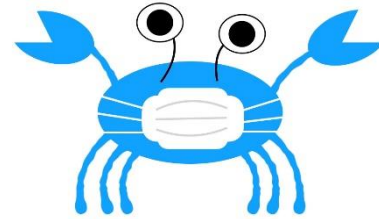
Thursday Feb 25

12:45- Closing comments

1:00- Rosemary Mosco- Birds & Moon Comics

1:45- Break

2:00- Session V- 90 min



Why Save A “Living Fossil”?- Patty Wettstein, J.N. Ding Darling NWR, Sanibel, Florida

Limulus polyphemus, the American Horseshoe Crab is the “living fossil” that has continued to survive amid human, shorebird, and bait demands. The horseshoe crab’s physical characteristics and adaptability have allowed for the survival of this species.

Bringing the Funny: Using humor to enhance your programs- Ken Rosenthal, Gulf Branch Nature Center, Arlington, VA

You don’t have to be a stand-up to add humor in your programs. Learn how to use humor to emphasize your theme while helping maintain audience interest and participation.

3:30- Break

3:45- Session VI- 60 Min

A Bitmoji and a Box- Jade Harris- Naturalist, Calvert County Natural Resources Division

Calvert County Natural Resources Division has adopted various methods to reach audiences during Covid-19. Bitmoji classrooms and take home science boxes are two methods used to engage participants in these challenging times.

Diversity-Reaching out to Hispanic Audiences via Social Media and Outreach Programs- Veronica Carlo Ortez, NPS Park Guide, William Casey, Park Ranger, National Park Service, Department of Interior

The National Parks of Boston are focused on making connections with the underrepresented communities of the Boston area, such as the Hispanic American community. National Parks of Boston uses a wide variety of techniques that help us with our strategy (such as being media savvy, virtual visiting, etc.) to inspire and reach members of the community. We also conduct outreach and interpretive programs. Open and continuing dialogue is one of the keys of success. We learn from the past, to serve better in the present, and move confidently into the future.

Coastal Virginia Ecotourism Alliance: Collaboration, Education, & Water Trails- Jessica Steelman, Coastal Planner, Accomack-Northampton Planning District Commission

How collaborative efforts among the coastal Virginia region work together to provide Ecotour Guide Certification and connect locals and visitors alike to world-class ecotourism and Virginia Water Trails.

We would like to thank our workshop sponsors for helping make this workshop possible.



ACORN
NATURALISTS®

